

Social Tension Detection and Intention Recognition Using Natural Language Semantic Analysis

(on the material of Russian-speaking social networks and web forums)

Olga Vybornova, Ivan Smirnov, Ilya Sochenkov, Alexander Kiselyov, Ilya Tikhomirov,
Natalya Chudova, Yulia Kuznetsova, Gennady Osipov

Dynamic Intelligent Systems lab, Institute for Systems Analysis of the Russian Academy of Sciences (ISA RAS)
Moscow, Russia

{vybornova, diver.ru, nchudova}@gmail.com, {ivs, sochenkov, tih, gos}@isa.ru, kuzjum@yandex.ru

Abstract—The paper proposes a method of social tension detection and intention recognition based on natural language analysis of social networks, forums, blogs and news comments. Our approach combines natural language syntax and semantics analysis with statistical processing to identify possible indicators of social tension. The universal components of our method incorporate the general laws of natural language, general psychological, sociological and psycholinguistic rules and trends typical of social tension detection in virtual discussions. Automatic monitoring of the contents of discussions helps to timely unveil hidden signs of tension and makes it possible to predict the likely development of the situation.

Keywords – natural language analysis, syntax, semantic roles, statistics, opinion mining, text classification, clustering.

I. INTRODUCTION

Web content analysis has recently become particularly essential to monitor the spirit of the society as a whole or particular groups of the society in order to reveal possible tension, aggression, political, religious, national, or racial conflicts and their reasons, dissatisfaction with the existing governing policy related to various aspects of the country life. With the enormous possibilities of the world wide web opinions and moods once dropped in locally spread fast with up to 5000 new posts per second covering large networks of people within just a few hours. Such well-known international social networks as Facebook, Twitter, LiveJournal, MySpace, as well as numerous local social networks, forums, blogs and websites are nowadays the most efficient means of information sharing. Automatic monitoring of the contents of discussions helps to timely unveil hidden signs of tension and makes it possible to predict the likely development of the situation. We are especially interested in the signs of people's intentions and particular plans to express their dissatisfaction not only virtually, but in real meetings that might lead to civil unrest, fights and collisions. Such monitoring of public virtual discussions, detection of people's mood in general, detection of possible leaders of groups initiating discussions and calling for decisive actions that involve large numbers of participants, tracking their posts, recognition of dramatic increase of tension at times – all these are urgent tasks in the modern world continuously perturbed by mass social actions, revolutions,

change of existing authorities, acts of terror, religious and national conflicts. Detection and prediction of mass actions would help to avoid multiple victims and prevent aggression by taking timely measures.

This versatile task comprises a lot of subtasks taking into account various sociological and political factors. Every particular situation in a certain region of the world can be considered only in the complex context of social, economic and political realm of that region. In this work we focus on development of a method for social tension detection and intentions recognition containing both universal parts applicable generally to any situation of tension occurred in any part of the world and caused by any reason, and parts to be updated and instantiated according to the actual reality of the region of interest. The universal components of our method incorporate the general laws of natural language, general psychological, sociological and psycholinguistic rules and trends typical of social tension detection in virtual discussions. The updatable components of our method consist of knowledge bases and ontologies (in their turn containing both universal and non-universal parts) that shall be instantiated with particular classes, names, attributes and relations actual for the particular region. As the experimental material we have chosen the Russian segment of the Web for 2 reasons. First, the majority of research has been conducted and impressive results have been achieved for English, German, French, Spanish, Arabic languages analysis. However the Russian segment of Internet is understudied, while Russian language is officially used not only on the Russian Federation, but also in the countries of the former USSR, such as Ukraine, Belarus, Kazakhstan, Kyrgyzstan, Uzbekistan, Georgia, Moldova, and in Russian-speaking communities all over the world, making 300 around million Russian-speaking people in total. Second, the difficult political and economic situations in some Russian-speaking regions provide us with generous experimental data to practically investigate the topic of social tension monitoring, thus making this material very promising to explore.

II. RELATED WORKS

Having carefully studied the works related to monitoring the overall spirit of social communities and data mining from

virtual discussions, we observe that our topic of interest is partly presented in the works on opinion mining, sentiment analysis, network analysis, “dark web” exploration, digital forensics and security. The Web offers an efficient, ubiquitous, quick, inexpensive, and anonymous means of communication for all possible kinds of society communities, including extremist groups. Substantial research has been conducted to analyze extremist groups and hidden hierarchy in terrorist networks [1], [2], [3], [4]. However little research has been devoted to web forums contents analysis where there is no particular network and no fixed hierarchy of discussion participants. The study [5] explores syntactic, stylistic features and their combinations in conjunction with the Entropy Weighted Genetic Algorithm (EWGA) for sentiment analysis of English and Arabic messages at word level to extract positive and negative messages with the accuracy of up to 93% on raw data.

A largely investigated topic is opinion mining for marketing research analysis to help organizations retrieve opinions of general public on certain products, events, etc. as in [6] and [7] to name just a few. Notably [8] gives a profound survey of existing opinion mining and sentiment analysis methods and language models both for separate messages analysis, but also for opinion summarization in a whole document and in collections of documents.

The work presented in this paper targets automatic syntactic, semantic and statistical analysis of discourse (blogs, forums and social network discussions with both head posts and comments in Russian) regardless of style and topic domain of discussion having the ultimate goal of detecting social tension presence, increase or decrease.

III. METHODOLOGY

To solve the problem of social tension detection on the material of various virtual communities discussions we have developed a methodology of handling tasks of this type based on linguistic and psycholinguistic theoretical prerequisites.

A. Linguistic analysis of texts

When forming a discourse, syntax deals above all with meaningful units bearing not only their individual lexical meaning, but also generalized categorical meaning in constructions of various complexity. These units are called syntaxemes (minimal indivisible semantic-syntactic structures of language [9], [11] [12]. Syntaxemes are detected taking into account: a) categorical semantics of the word; b) morphological form; c) function in the sentence (according to the constructive capabilities within a sentence there are there functional types of syntaxemes: free, conventional and bound).

Categorical semantics is a generalized meaning characterizing words that belong to the same categorical class (for instance, to the class of people, things, attributes for nouns).

Let us consider some examples of different syntaxemes that are similar in form, but different in meaning:

- (1) The mother brings her son *to school*.

- (2) Laziness brings researchers *to trouble*.

In (1) “*bring to school*” denotes a spatial noun with the directive meaning (direction of movement), it is a free syntaxeme, since its meaning does not depend on the position in a sentence. In (2) “*bring to trouble*” denotes an attributive noun meaning the resulting logical consequence. It is a conventional syntaxeme, since its meaning is realized only in a certain complicative model in the position of a semi-predicative complicator of the model. In total, we distinguish between 65 semantic meanings of syntaxemes.

In a particular discourse, in a particular sentence of a text a word performs as a syntaxeme, i.e. has a certain syntactical function, in a certain grammatical form, it realizes only one of the possible meanings which this word can take in this sentence/phrase. The main task of the semantic analysis is to reveal semantic relations between syntaxemes. In our approach we process 31 semantic relations between syntaxemes.

In general, a semantic relation is understood as a relation of concepts in the conceptual system of the domain. The representatives of semantic relations in lexis are predicate words, i.e. lexemes representing predicates. The verbs are predominant here, since they mostly hold the central position in the semantic structure of the sentence. The information on syntactic compatibility of every verb is recorded in special tables of relations. The tables of relations for each verb indicate types of relations between its syntaxemes (arguments). We then can construct an ordered map of triples: $\langle relation, arg1, arg2 \rangle$, where $\langle relation \rangle$ denotes the semantic relation type, and $\langle args \rangle$ are dependency trees for a corresponding noun phrase (NP) or prepositional phrase (PP).

To perform the semantic analysis, first of all it is necessary to extract predicate words (predicators). If a verb is a predicator in the sentence, it can be detected immediately at the stage of morphological analysis. In other cases (when the predicator is a participle, a verbal noun, etc.) additional rules are applied.

When the predicate word and NPs related to it are detected, the arguments in the predicator syntaxemes structures should be filled up. The filling is made by using special linguistic dictionaries where a certain set of syntaxemes is associated with each predicator. Some rules of context and domain consideration are used to remove polysemy. The predicate dictionary composes the linguistic knowledge base describing 2998 predicates with their relations and arguments. This dictionary describes the ways of syntactic manifestation of different types of semantic relations between concepts. The list of predicators for the Russian language contains verbs and various verb derivative forms. The predicate dictionary also has the table of relations between the set of syntaxemes and the set of predicator arguments. Besides, the linguistic dictionary indicates how NPs are interrelated within predicate argument structures. A set of binary relations within the set of syntaxemes is also specific for each type of predicate words and is defined a priori.

The collection of NPs and binary relations between them is presented in the form of a semantic graph describing the situation in the neighborhood of one predicator. This graph is a fragment of the semantic network describing the semantic

image of the whole text revealing all semantic relations between entities and fostering facts extraction from the text.

According to the meanings of syntaxemes prevailing in a given discourse we can identify if this text is likely to contain tension, or it is rather neutral. For instance, the tensed texts contain a lot of syntaxemes with the liquidative (where the object of causative action does not exist anymore) and destructive (the object of causative destructive influence) meanings, like in *свергнуть правительство* (to topple the government), *взрывать дома* (to blow up buildings). The presence of syntaxemes with liquidative and destructive meanings is a clear indicator of tension, as we will show further in the experiments description section of this paper.

B. Psycholinguistic indicators of social tension

Psycholinguistic indicators of tensed emotional state and neurotic disorders are typically characterized by prevalence of:

- first-person singular pronouns;
 - first-person singular verbs in past tense;
 - verbs in passive voice;
 - impersonal verbs;
 - in the texts
- and the number of nouns and verbs increases relatively to attributes and adverbs in time [13], [14].

Having collected and studied a representative material from Russian, Belorussian and Kyrgyz resources and looking at the psycholinguistic indicators of social tension we state the following hypothesis: texts generated by healthy people in the state of emotional tension contain indicators of problematic spirit that are absent in the texts generated by the same people at different time (before or after the emotionally rich situation). Thus the increase or decrease of the corresponding psycholinguistic indicators reflects the current emotional state of the text author. If there is mass increase of emotional tension indicators in some community, we can assume that emotional contagion, i.e. processes of grouping take places based on the common affect. At such moments the virtual community can be considered as potentially ready to proceed to coordinated actions in reality.

C. Facts extraction from the text

Practically in our application of interest, in order to recognize the intentions for real street actions or other decisive steps from the virtual discussion participants, we shall capture the details about (at least) the place, date, time of the planned action, possibly the reasons of the action, the potential participants and the initiator(s). To extract all these facts from texts we apply search for syntaxemes with the following meanings:

- Locative: the component with the meaning of location. Example: *the troops are concentrated in the city*
- Temporative: the component denoting temporal characteristics. Examples: *next week*, *at 5 pm*
- Directive: this syntaxeme means the direction of movement, of a goal-oriented action or position. Examples: *to the square*

- Subject: the syntaxeme having a predicative component, like in: *the candidate gave up participation in the election.*
- Causative: the reason of action, or of the occurrence of the feature or property. Example: *to punish for robbery*

D. Other indicators of tension

Besides linguistic and psycholinguistic indicators we also pay attention to such quantitative indicators of tension as:

- Number of comments per day
- Number of commenting users per day

The experimental data show that these last two indicators strongly correlate. The higher is the number of commenters and the number of comments they generate per day for certain posts, the higher is the probability that the topic of discussion is of special importance for the people leading to intense discussion with emotionally tensed signs. When these statistical factors are combined with linguistic and psycholinguistic data observed in correlation, highly accurate result is obtained allowing to reliably detect tensed texts.

IV. EXPERIMENTAL RESULTS

As the experimental material we have collected around 600.000 texts – pieces of discourse (news on websites, head posts and comments in LiveJournal, forums and social networks) for the period of 2009 – 2011. We clustered all these texts into two conventional collections – the collection of tension (taken mainly from political and socio-economical discussions, blogs of opposition and nationalist communities that undertake street actions and riots from time to time) and the neutral collection (containing no indicators of tension, blogs discussing normal every-day life activities like travelling, pets, cooking, shopping, etc.). We have processed around 300.000 texts in each collection. Initially this distinction for tensed and neutral test collections was made manually in order to compare the processing results, to derive the tension indicators and rules of their occurrence and then to apply these rules for automatic detection of tensed texts.

As described in the previous section, we have extracted the linguistic and psycholinguistic indicators of social tension, applied the combinations of them to the real corpora, and obtained the results as follows.

The comparison of the neutral and the tensed collections showed a clear difference on the following statistical factors:

- a larger number of words in the tensed texts in average;
- a larger number of sentences in the tensed texts in average;
- a larger size of sentences (counted in words) in the tensed texts in average.

The calculation method is the following: we calculate the frequency of a given indicator in the text. Then we calculate the mean frequency for all texts per each day:

$$F_i(d) = \frac{f_i(d)}{c(d)}$$

Here $f_i(d)$ – is an absolute value for each indicator 1)–3) in texts per day d , $c(d)$ – is the number of texts for day d .

Lexical indicators of tension are calculated as follows: we calculate the absolute frequency of a word or a phrase in texts per each whole day. Then for each day we sum this value with the values for the previous two days. Thus we get an integrated sum for every three days:

$$\begin{aligned} Lex(w,d) &= \alpha \cdot F(w,d) + \beta \cdot F(w,d-1) \\ &+ (1 - (\alpha + \beta)) \cdot F(w,d-2) \end{aligned} ,$$

$$\alpha + \beta \leq 1$$

$F(w,t)$ – is the absolute frequency of a word or a phrase w in texts for day d . In the conducted experiments we assumed $\alpha = \beta = 0.333$.

The examples of lexical entries used for the experiments:

Verbs: *собираться* (to gather), *выходить* (to leave [homes])

Phrases denoting calls for real actions: *пора* (it's time to), *место сбора* (the meeting place is)

Nouns denoting possible places of planned actions: *street*, *square*

Semantic indicators of tension are calculated in the following way: we calculate the absolute frequency value for syntaxemes with the liquidative and desctructive semantic roles in texts for each day and then the integrated value for three days is derived:

$$\begin{aligned} Sem(r,d) &= \alpha \cdot F(r,d) + \beta \cdot F(r,d-1) \\ &+ (1 - (\alpha + \beta)) \cdot F(r,d-2) \end{aligned}$$

$$\alpha + \beta \leq 1$$

$F(w,t)$ – is the absolute frequency of syntaxemes with the role r in texts for day d . In the conducted experiments we assumed $\alpha = \beta = 0.333$.

We processed users' comments paying attention also to the author of the comment and its date. We considered comments from 2009 to the present day. We looked for the changes of indicators values around the date corresponding to certain events, such as for instance: unrest in Moscow at Manezhnaya Square on December 11, 2010 and at Europe Square on December 15, 2010.

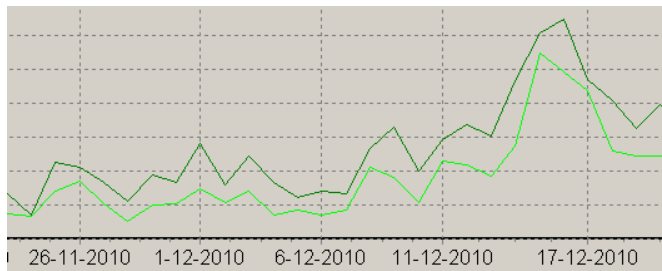


Figure 1. Dynamics of users communities activeness. The upper graph shows the dynamics of the number of commenters. The lower graph shows the dynamics of the number of comments.

We can see the growth of discussion activeness from December 8 with the peak on December 15. We can also note the intense growth of activeness on December 14 due to the peak tension right before the social event of interest, and December 15 is characterized by the high tension and reaction to the event.

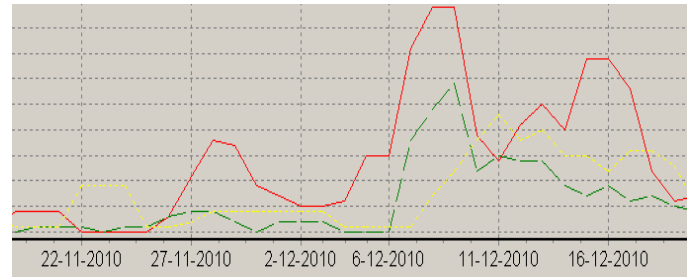


Figure 2. Dynamics of lexical indicators of tension. The solid line – is the frequency of the verb “to gather”, the stroke line is the frequency of the verb “to protest”, and the dotted line shows the word “unrest” (corresponds to the Russian word “беспредел”).

We can see that values of the indicators start to grow dramatically around December 6, and reach the peak right before the unrest events at Manezhnaya Square.

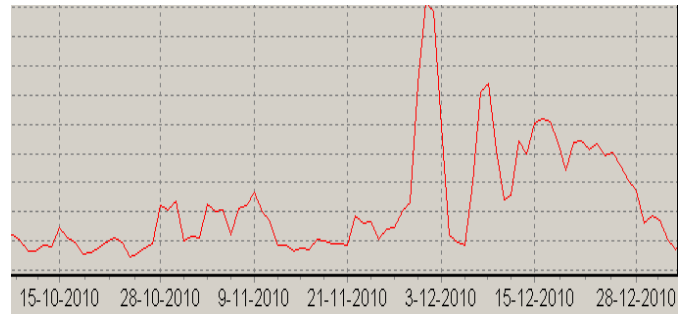


Figure 3. Dynamics of the semantic indicators of tension. Frequency of words with the semantic meaning “liquidative”.

As we can see in Figure 3 the liquidative semantic meaning frequency starts to grow high from early December and has high values almost all the month.

It should be noted here that the presented general approach is universal for any topic of discussion. However particulars like lexical indicators of tension can vary according to the region of interest. For example, proper names of politicians or government members in particular countries frequently used in tensed discussions will be different. Peculiarities like this can be handled using domain knowledge bases and ontologies that shall be instantiated with particular classes, names, attributes and relations actual for the particular region.

V. CONCLUSION AND FUTURE WORK

In this work we have presented a model for social tension detection and intentions recognition on the material of Russian-speaking social networks, web forums and blogs.

We have showed that there exist clear linguistic, psycholinguistic and statistical indicators of social tension in virtual communities. The experiments proved that values of

these indicators grow strongly around certain real events of social protest, and they start to grow right before these events. This allows us to claim that the extracted indicators can be applied for detection of the degree of social tension and for prediction of real social protest actions.

The future works will go in two main directions. First, we plan to add multimedia analysis to our work, monitoring apart from natural language texts also images, video and audio materials posted in the social networks, forums and blogs associated with the text contents. Second, we are going to expand our domain models and ontologies so that to be able to precisely analyze social situation in particular regions by means of comprehensive semantic representations of the texts and collections of texts defining all relations and attributes between entities.

REFERENCES

- [1] N. Memon, J. Hu, D.Hicks, H. Chen, "Social Network Data Mining: Research Questions, Techniques, and Applications", I: Data Mining for Social Network Data. red. / N.h Memon ; J. Xu ; D. Hicks ; H. Chen. Vol. 12 Springer Publishing Company, 2010, pp. 1-7.
- [2] N. Memon, H. Larsen, D.Hicks and N. Harkiolakis, "Detecting Hidden Hierarchy in Terrorist Networks: Some Case Studies", *Intelligence and Security Informatics*, Springer, pp. 477-489, 2008.
- [3] H. Chen, W. Chung, J. Qin, E. Reid, M. Sageman, G. Weimann, "Uncovering the dark Web: A case study of Jihad on the Web" in *Journal of the American Society for Information Science and Technology*, vol. 59 Issue 8, June 2008.
- [4] T. S. Raghu, H. Chen, "Cyberinfrastructure for homeland security: Advances in information sharing, data mining, and collaboration systems" in *Journal: Decision Support Systems - DSS*, vol. 43, no. 4, pp. 1321-1323, 2007.
- [5] A. Abbasi, H. Chen, A. Salem, "Sentiment analysis in multiple languages: Feature selection for opinion classification in Web forums", in *ACM Transactions on Information Systems (TOIS)*, vol. 26, Issue 3, June 2008.
- [6] Bing Liu. "Sentiment Analysis: A Multifaceted Problem." Invited contribution to *IEEE Intelligent Systems*, 2010.
- [7] Bollen J., Mao H., and Zeng X.-J. Twitter mood predicts the stock market // *Technical Report arXiv:1010.3003, CoRR*, 2010. [Http: http://arxiv.org/pdf/1010.3003v1\](http://arxiv.org/pdf/1010.3003v1)
- [8] B. Pang and L. Lee *Opinion Mining and Sentiment Analysis // Foundations and Trends in Information Retrieval*, v.2 n.1-2, January, 2008 - pp.1-135.
- [9] G. Osipov, I. Smirnov, I. Tikhomirov, O. Vybornova, O. Zavyalova: Linguistic knowledge for search relevance improvement // In: *Proceedings of the Joint Conference on Knowledge-Based Software Engineering (JCKBSE 2006)*, August 28-31, Tallinn, Estonia.
- [10] I. Smirnov, I. Tikhomirov. Heterogeneous semantic networks for text representation in intelligent search engine EXACTUS. // *Proceedings of workshop SENSE'09 - conceptual Structures for Extracting Natural language SEMantics, The 17th International Conference on Conceptual Structures (ICCS'09)*, July 2009, Moscow, Russia. P.1-9.
- [11] G. Osipov. Technology for high precision semantic search and text analysis.// *2nd Spanish-Russian ICT Forum/Publisher: International Union of Instrument & ITT engineers - M.: 2009, P. 8-10.*
- [12] I. Smirnov. Generation of rules of minimal semantic-syntactic text units values determination. In: *Scientific technical information, Series 2. Information processes and systems, Russian Institute for Scientific and Technical Information RAS, No.6, 2007.*
- [13] E. Nosenko "Peculiarities of speech in the state of emotional tension3 (original title: "Особенности речи в состоянии эмоциональной напряженности"), Dnepropetrovsk, 1975.
- [14] N. Dodonova, "Diagnostics of lexical-semantic and morphological features of neurotic patients" (original title: "Диагностическое значение лексико-семантических и морфологических особенностей речи больных неврозом") PhD thesis, 1988.